



QuantOM Mono Crystals®
ROSE QUARTZ

www.nutriq.ch



***QuantOM Mono Crystals® Rose Quartz is
the Essence of Rose Quartz Crystal.***

This is a unique product crafted in the
Swiss Kristall laboratory in Switzerland.

The manufacturing process involves the latest
technologies to obtain crystalline extracts paired
with the centuries-old experience of using crystals
in different cultural traditions. These creations are
designed

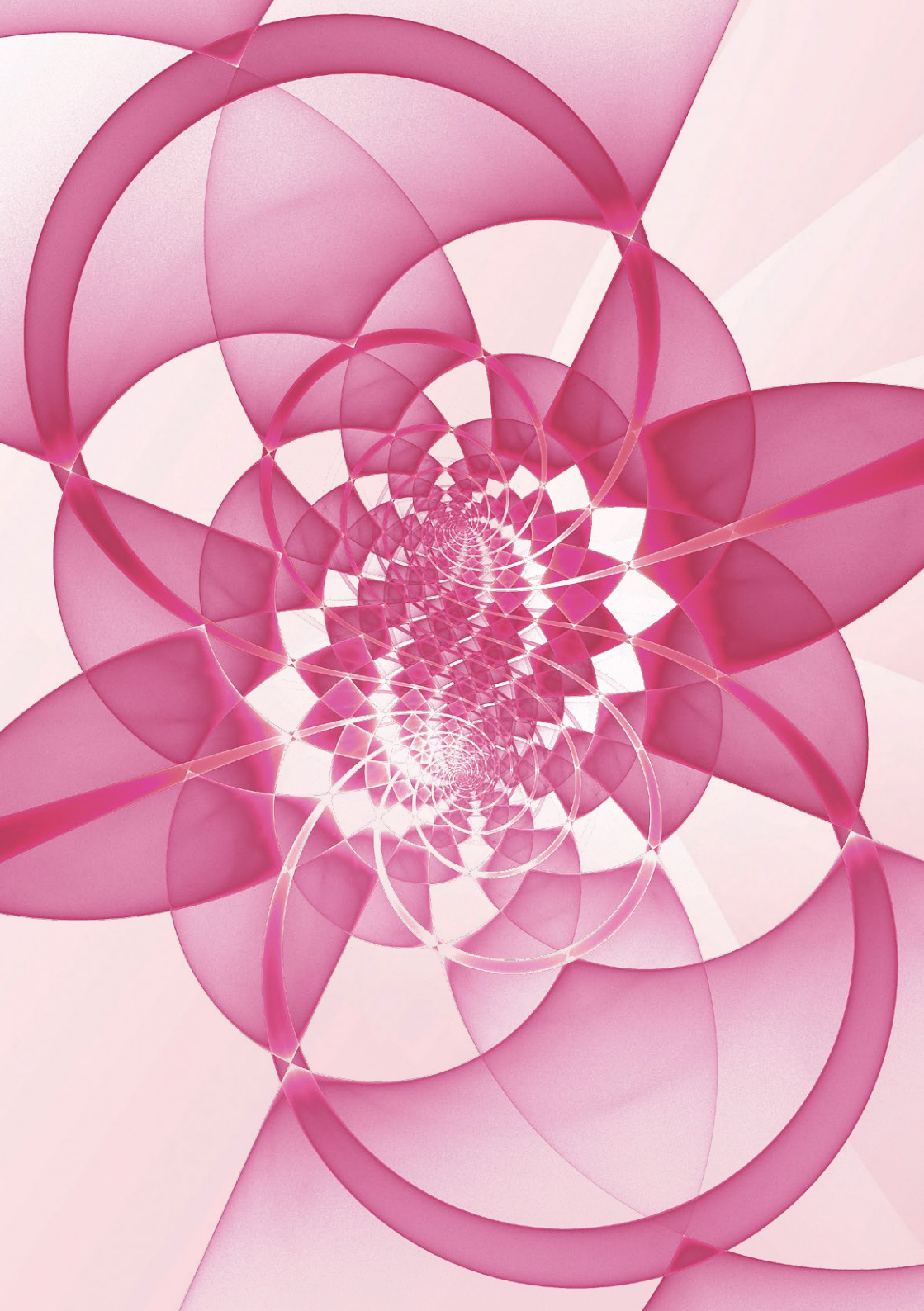
for people who are interested in improving their health
and developing their bodies and mind.

The use of the crystalline essence of rose quartz is
important for alleviating many common physical and
mental issues. When we use this product, we protect
our bodies and brain cells from destruction and are
treated to a special feeling of lightness and freshness.

The essence helps rid the body of destructive
oscillations in the blood, skin and a number of cerebral
vessels, while also improving the muscular system.

Thanks to its mild effects, it helps users calm down,
relax, regulate emotions and nurture their feelings.

***QuantOM Mono Crystals® Rose Quartz is
something that is yours personally.***



Using and Consuming Crystals

Each crystal in nature emits its own kind of energy with a special frequency measured in Hz. A human being is able to enter into a qualitative relationship and resonance with this frequency via the regular, conscious and controlled practice of crystal intake, or nutrition yoga.

The main feature of crystal nutrition is obtaining the specific energy the particular crystal embodies. The art of crystal nutrition involves various intake methods, from the external contact of wearing body jewelry, to the consumption of crystalline essences (crystal extracts), which is the most effective way of obtaining a crystal's power.

What is Crystal Essence?

Crystal essence is an extract obtained after extensive processing in a laboratory, with all of its original properties retained. The energy contained in crystal essences is able to penetrate the internal organs of the body and resonate with them in harmony, nourishing them.

Consuming the essence of a crystal changes the energy frequency of the human body and improves our overall performance. The energy generated by the crystal essence is not of a temporal nature, and instead expresses timeless laws.



Nutrition with Rose Quartz

Why Rose Quartz?

QuantOM Mono Crystals® Rose Quartz is a crystalline essence made from rose quartz crystal with just the right degree of energy required for nutrition and consumption. It has a crystalline structure and frequency, which exerts an effect on blood cells called erythrocytes. The main benefit from the essence here is to organize these cells to form a more harmonious structure in a person's biology, while simultaneously tuning it to higher signals.

In nutrition yoga, rose quartz is the most gentle and easy-to-assimilate stone, and it is known to help people feel as if they were young again no matter what their age. This practice teaches to accept the foundations of crystalline nutrition in general, and brings about an ecstatic sense, a sense of satisfaction with the ability to assimilate high-vibration foods, and also replenishes energy. Rose quartz is a symbol of permanent youth that fights back against the processes of disintegration and decay.

Nutrition with rose quartz involves a change that is minor yet significant: rose quartz does not just change the general condition of the body, it also supports it, meaning it helps to better absorb the vibrations caused by it. The essence of rose quartz can be thought of as a mentor in interactions with crystals. It helps people remodel their psychological attitudes towards food in general, making the main focus the art of energy assimilation rather than a reaction to food itself. This carries with it the understanding that nutrition with

crystals is not considered in terms of the amount of protein, fats, carbohydrates, or vitamins, but in terms of the energy intended to nourish, first and foremost, bone marrow and the endocrine system. This is 'waste-free' nutrition, i.e. it is completely absorbed by the body, creating ideal conditions for bodily nutrition and supporting the body's physiological characteristics.

The energy of rose quartz crystalline essence is aimed at ensuring that the whole body retains its physical and energetic properties, in turn generating a need for quality food. After all, the body's general condition does indeed determine a person's needs and behavioral patterns, which also means certain tastes are in a way imposed on us.

Nutrition with rose quartz teaches us to change our inner space, converting it to the laws of regeneration and energy accumulation and raising it above its basic production capacities. At the same time, nutrition with rose quartz is not about evoking any specific sensations. It is about including the body in the general operating principles aimed at perfecting its nature, and the simultaneous activation of processes that earlier could not be engaged due to low-frequency nutrition combined with poor food choices. Under the influence of rose quartz, our physical body should feel the results of its effects, but here a lot depends on the nutrition discipline and diet as a whole.

Practical Benefits

The essence is beneficial for nourishing the cells of the blood and lymphatic system, and can be used as a standalone product or as a complement to other formulas. However, the most significant benefit of taking the essence lies in its impact on the brain. This product has the most beneficial effect on the occipital and temporal lobes of the brain; it strengthens the human psyche, making it more calm and stable, and simultaneously gives us a pleasant feeling of lightness.

The product breaks down and crushes rough waves in the body, converting them instead into a more stable sound that is incredibly beneficial for the body's vessels, skin, and the epithelial tissue of internal organs and the lymphatic system.

The crystalline structure enters into resonance with the body's biochemical processes (focused on temporal energy) and represents a quantum force (a momentum of timeless space in our body), which is indeed the most special value and importance of this mineral. Speaking more generally, it is a wonderful essence that helps us study ourselves in terms of the vast complexity of the macrocosm.





Great Work (Magnum Opus)

Macrocosmic Proportions of Rose Quartz

The use of rose quartz has a long history of use associated primarily with ancient Egypt, Greece and Rome. The specific qualities of rose quartz predetermined human attitudes toward it as a stone endowed with rays of divine light, which for the ancient Greeks was personified in the goddess Hebe. It can be confidently said that it reproduces the state of experiencing feelings associated with youth.

On the other hand, Celtic tradition also associates rose quartz with Aengus, the god of youth, who just like this mineral personifies youthfulness and freshness. There is also a legend that in the search for eternal youth the alchemist Alessandro di Cagliostro (real name Giuseppe Balsamo, 1743-1795) worked with powders using rose quartz.

In the Christian tradition, rose quartz is the stone of kind angels. All this can be linked to the scientific theory of vibration, which is based on the very simple physical principle that all matter vibrates. Rose quartz vibrates at frequencies that can interact and resonate with frequencies of the human body, and in turn nourish and heal it.

Production Process

QuantOM Mono Crystals® Rose Quartz is produced in a specialized laboratory using technologies that preserve all the beneficial properties of the crystal. The production method itself is based on the experience of using crystals in the Taoist (Chinese), ancient and medieval European alchemy, where the production of such essences was called Magnum Opus (“Great Work”), due to the complexity and quality of the process.

The production process includes the following steps:

- * Selection and preparation of the mineral
- * Maturing and tuning
- * Transition of the crystal form into the crystal body
- * Nourishing the crystal body
- * Drawing out the integral force
- * Sublimation
- * Transferring the crystal energy into a medium that can be assimilated by the human body
- * Embryonic cultivation of the crystal
- * Growing the embryonic geometry of rose quartz
- * Fortifying the ethereal body of the crystal
- * Fortifying the substance.

After all of these steps are completed, the crystal is processed into a liquid substance that is then ready for internal use. Producing this essence takes up to a full year, and involves a unique process of transferring the crystal’s energy. But it is not simply the transfer of energy that is important in the production process: creating conditions that perfect the body of the crystal itself is also crucial.

For this to work properly, it is important to combine in a single chain of actions various efforts aimed at the crystal, i.e. efforts of a physical, biochemical and energetic nature. The most important aspect of this work is to use high-quality glass wherever the obtained essence is stored.

Another interesting aspect of essence production is the issue of preserving and growing the crystal body. The formula of the essence is such that it continues to improve even after production. However, to do this, the crystal requires a growing medium that is crafted over a period of one year using a special alcohol tincture, which by itself is an energy-active preservative, and although it is not completely digestible by the body, it is very beneficial for it.

The resonance formula is created specifically for the crystal in order to support and nourish it. An important consideration in the development of the formula is to provide the proper conditions to retain and preserve the useful qualities of the essence, which is achieved by focusing the essence on itself and protecting it against external influences. Otherwise, the crystal responds to the surrounding fields and vibrations that, thus disrupting the energy system of the crystalline essence.

The crystal essence of rose quartz is an active formula based on the physical characteristics of rose quartz. The crystalline structure determines the integral level of the essence, i.e. its strength.

Properties of the Essence

**SPATIAL
FREQUENCY:
432 HZ**

The crystal essence of rose quartz is a fragmentary reflection of a part of our Universe, and expresses a timeless force in terms of the temporal parameters of the Earth. Its frequency equivalent is 432 Hz, which is important because this characterizes the kind of indestructible energy that can be absorbed by anyone.

**RESONANCE
FREQUENCY
105.8 HZ**

The resonance frequency is the result and nature of tuning rose quartz to parameters outside of temporal bounds.

**HARDNESS:
7**

Hardness keeps pink quartz within the laws of timeless space, protecting the body from any drops in its energy parameters.

**COLOR:
ROSE**

Iron, titanium and manganese ions combine to give quartz its signature rosey hue. The state of consciousness associated with the mineral can be referred to as «rose radiation,» and its appeal to comfort can be found in its illumination. The need to view the world through rose-tinted glasses is rooted deeply in the human brain. The crystalline essence of rose quartz facilitates soft, light dreams through the color's very nature. This is also important from the perspective of emotional turmoil, which as a rule forms the basis of self-confidence. The crystalline essence of rose quartz functions as a shaping force of the inner human space through the power of its crystallized color, and allows those it nourishes to preserve the state of their childhood.

**INTERNAL
ILLUMINATION:
PEARLY**

The internal illumination or the luminosity of the crystal is described as its light characteristics, and together are an important focus of attention in the production of the essence. It aids the human body to maintain its natural balance, gently steering your mindset away from depressing states of irritation and mental disorders. By preserving the necessary vibrations in the essence, we can posit this as the special master key of rose quartz that generates healthy processes in the human body, which — and this should never be forgotten — also has a crystalline liquid base.





P Proper application and use

Taking the essence implies your readiness for a disciplined nutritional regimen. In addition to observing the rhythm necessary for the consumption of high-frequency foods, you should pay careful attention to the quality of food in general. The regimen is divided into several levels.

Simple use

Using the essence as an independent source of food is aimed at strengthening the body's general condition and should be approached as a kind of preparation to teach you more about nutrition with crystal essences. Take 1 to 3 drops daily in the first half of the day. Abstain from food for two hours before and after taking rose quartz. Example: first dose at 10:00, and first meal at 12:00.

As part of Nutrition Yoga

When dosing as part of the Nutri Q nutrition system, where other crystalline essences are also used, 5 to 8 drops may be prescribed. Take once a week using a carrier (green tea) or mix with saliva.

Alchemical food

Alchemical food is a kind of food for people possessing certain special abilities that contributes to changing and improving energy breathing. This practice requires deep concentration, self-tracking of changes, and a larger amount of the essence to be ingested, i.e.

13 drops.

Intake must be accompanied by a maximum amount of rest, and it is especially important to avoid external activity. Avoid any food four hours prior to and two hours after ingestion, although green tea can be consumed within this time frame, if desired.

Rose quartz diet

A diet using rose quartz is probably the most exciting, but at the same time most demanding process. The diet regimen is as follows: take for one day, then a week later for three days, and finally for seven days after another week.

This type of diet is aimed at the rejuvenation and recovery of blood vessels, as well as the general restoration of the whole body. Its objectives include a revitalization of the crystalline essence, or more specifically, its “emerging growth” in our body.

The product is recommended to ease the body away from its previously destructive processes. Throughout the duration of the diet (starting three days prior to the first dose and ending three days after the final dose), it is important to avoid animal protein, sweets and chocolate, fatty foods, and bread. In accordance with this regimen, the crystalline essence is consumed at the rate of one drop every two hours (including at night) on established days. On these days, no food should be consumed. Water and herbal tea should be drunk in the amount of 2-3 liters per day.

Intake

Crystals are the most well-ordered structure that exists in nature. The function of a crystal's state is directed not at the dissipation of energy, but at its accumulation. To create nutrition from a crystal is a complex and difficult challenge, but crystals can respond to any type of energy and interact with it as well. The crystalline structure is the highest form of matter, and its comprehensive study is still ongoing.

This product is commercially approved in pharmacies in Switzerland and other places where natural products are sold. Certified in the Russian Federation, the product meets all the necessary safety requirements, but the dose regimen must ultimately be verified by a specialist.

Warnings

It should be kept in mind that this product has not been fully researched as a medical drug, and is designed for use as part of a high-frequency nutritional regimen. The product is not a medicine; it is directed at encouraging systematic changes to the body's properties. It requires a proper balance and a clear understanding of its goals. Crystalline essences are recommended only for those 21 years of age or older, after the body has reached full maturity. It is important to follow the proper recommendations on consumption when taking the product. The consumption of high-vibration foods is recommended as part of any proper nutrition yoga system. Children and pregnant women may take the product only based on a specialist's recommendations. It is prohibited to take the product without first reading the available information on it.



About the Essence Creator

Oleg Cherne is a modern day alchemist more widely known by his Taoist name Jie Kong. For more than 35 years he has been researching various systems of development, among which Taoism is considered his main focus. He has authored more than 50 books related to human development and recovery issues, which have been released in Russian, English, Spanish and Bulgarian.

Oleg Cherne received his name from a Taoist hermit, the immortal Wu Bei. He works to both develop and systematize knowledge in external alchemy associated with bodily change and improvement. After practicing the Art of the Yellow and White (another name for Taoist alchemy) for over 35 years, he has studied and tested a range of nutritional systems, and has formulated a firm position that food should develop the body, and not just fill you up.

Using Taoist medicine and the teachings of Taoist alchemy about body crystallization as a basis, he has created the Nutri-Q Yoga system, aimed at a transformation of the body from a lower state to a higher one through integral nutrition. The system is based on using products that do not decay the body, and are founded on the principles of crystal nutrition.

By combining all his accumulated knowledge of Taoist alchemy with the newest possibilities in modern technology, he has created a unique model of human development. During his study of the different ways to extend and transform life, he was able to put his knowledge to practice after meeting with Swiss alchemists, the successors of Paracelsus, who possess the knowledge of how to transform the crystal into a product fit for nutrition. This helped Oleg

create a high-vibration nutritional system based on nutrition yoga with its fundamental principle as a lack of dependence on bulky food. Although Oleg Cherne indeed puts forth the idea of high-vibration, high-molecular nutrition, he defines his objective as not to wean a person from eating, but to teach them how to be independent from food: “I see a way to perfection in the Nutri-Q Yoga system, not just taking some particular food as the narrow focus of a limited diet.”

After trying out various nutrition systems on himself, researching, experimenting with a large quantity of existing high-energy plants and herbs, and testing dozens of crystalline extracts from crystals, Oleg has created a structural system of nutrition based on nourishing, strengthening and developing the brain: “In any development, everything depends on the quality, strength, and most importantly, the adequacy of the brain,” says Oleg.

Although the teachings of Oleg Cherne are unique, he relies in his research and achievements on his mentors and, most importantly, on those, as he says so himself, “who have been able to successfully apply nutrition yoga in their daily lives.”





